

Classifieds (Continued from previous page)

TEXAS STATEWIDE CLASSIFIED ADVERTISING NETWORK



TexSCAN Week of
September 14, 2008

BUSINESS OPPORTUNITIES

ALL CASH CANDY Route. Do you earn \$800 in a day? Your own local candy route. 30 machines and candy. All for \$9,995. 1-888-625-5481. Multi Vend, LLC.

RED BULL, MONSTER, 5-hour energy drink routes. National accounts available. Profit potential \$40K-\$400K Yearly! Call 24/7 1-888-428-5392 Code 301. Minimum investment required!

CARS FOR SALE

\$500! POLICE IMPOUNDS! 1999 Chevy Malibu \$1,050! 1999 Dodge Intrepid \$600! 1999 Chevy Tahoe 4x4 \$1,600! All run good! Cars from \$500! For BNI Listings 1-800-544-1092, ext. L750

DRIVERS

CDL-A DRIVERS: EXPANDING Fleet offering Regional/OTR runs. Outstanding pay package. Excellent benefits. Generous hometime. Lease Purchase on '07 Peterbilts. National Carriers, 1-888-707-7729, www.nationalcarriers.com

DRIVER - CDL-A. PTL Supports The Red, White & Blue. Students with CDL. Welcome. Excellent training. Company drivers earn up to 46¢ cpm. Owner operators earn \$1.36cpm. No forced North-east. Company drivers call: 1-888-PTL-DRIVE

DRIVERS: CALL ASAP! Sign-On bonus 35¢-41¢ cpm. Earn over \$1000 weekly. Excellent benefits. Need CDL - A & 3 months recent OTR. 1-877-258-8782, www.meltontruck.com

DRIVERS- WE'VE GOT IT ALL! \$5000 Sign-on with 1 year OTR experience. Students welcome, tuition reimbursement available. www.feddrivers.com. Call FFE, Inc. 1-800-569-9229

LOOK! WE NEED a few good men! Limited, SGT 2000 Motor Freight wants Owner Operators! Call Paul at 1-713-674-4206.

EDUCATION/SCHOOLS

CAN YOU DIG IT? Heavy equipment school. 3 week training program. Backhoes, bulldozer, trackhoes. Local job placement assistant. Start digging dirt now. 1-866-362-6497

HOMES FOR SALE

7BR 4BA HUD \$19,812! 3BR 2BA only \$10,900! 5BR, 3BA only \$17,080! Foreclosures & bank repos! These homes must sell! For local BNI listings call 1-800-544-6258 ext. 9847

BANK FORECLOSED HOMES! Only 3 left: Payne Springs, Waxahachie, & Trinidad, Texas. Totally redone. Owner financing available with down payment. Call today! 1-972-228-2178

MEDICAL SUPPLIES

SCOOTERS & POWER WHEELCHAIRS. Did you know in most cases Medicare, Medicaid and Insurance pay 100% of the cost? Call Melissa or Jon for details. 1-800-606-9860, www.medicaremedicalsupply.com.

MISCELLANEOUS

AIRLINES ARE HIRING Train for high paying aviation maintenance career. FAA approved program. Financial aid if qualified. Job placement assistance. Call Aviation Institute of Maintenance, 1-888-349-5387.

ATTEND COLLEGE ONLINE from home. Medical, Business, Paralegal, Computers, Criminal Justice. Job placement assistance. Computer available. Financial aid if qualified. Call 1-866-858-2121, www.CenturaOnline.com

REAL ESTATE

20 ACRES NORTH of Brackettville. Dry creek bottom, heavy oak, cedar cover. Deer, turkey, hogs. \$1700/acre, owner or TX Vet financing. 1-830-257-5564, www.texasranchland.com

35+ ACRES FROM \$34,900 First Come, First Served Saturday, October 4, 2008 Southern Colorado ranches. Excellent financing available. Call for your private property tour 1-866-696-5263, Ext. 4579

MEYERS CANYON, TRACT 58, 247.49 acres at \$325 per acre. Good draws, west Texas, Terrell County. Owner or TVLB financing. 1-866-286-0199, www.westernland.com

OWNER SACRIFICE MUST sell quickly. 1 acre with covered boat slip for only \$39,900! Owner finance. Won't last. Call now! 1-888-316-5253.

PRICED TO SELL! Newly released Colorado Mountain Ranch. 35 Acres-\$39,900. Majestic lake & mountain views adjacent to national forest for camping or hiking. Close to conveniences. EZ Terms. 1-866-353-4810.

TEXAS 20 ACRES Only \$13,500, with \$0 down, \$135 monthly. No credit check. Roads-Surveyed. That's only 1.5¢ per sq. ft.! Free Information. 1-800-887-3006, www.lonestarinvestments.com

TEXAS GULF COAST Estate Size Bayfront Lots! High elevation property, newly bulkheaded, tremendous bay views. Great fishing! Close to Matagorda Bay & 15 minutes to shopping. Excellent financing. Call now for special end-of-season prices! 1-866-999-2297, ext. 1165

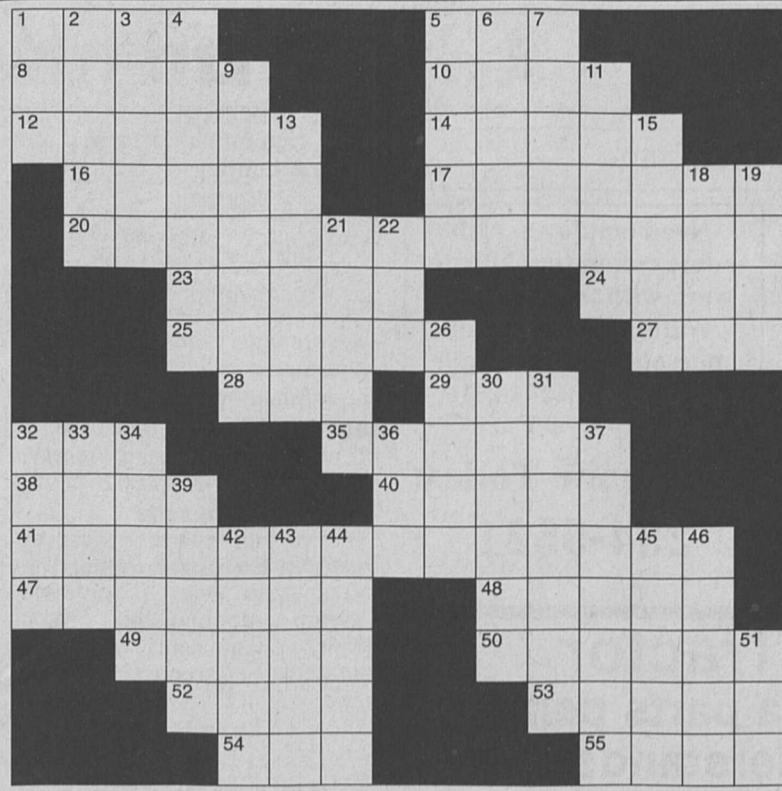
WATER VIEW! 2 Acres only \$49,900 Majestic oak setting, direct access to Gulf. 5 minutes to Mall. Close to Houston. Must see. Terrific terms. Call now 1-866-999-6697, ext. 1154

Run Your Ad In TexSCAN!

Statewide Ad \$450
303 Newspapers, 1,017,914 Circulation
North Region Only \$195
98 Newspapers, 276,853 Circulation
South Region Only \$195
103 Newspapers, 488,823 Circulation
West Region Only \$195
102 Newspapers, 252,398 Circulation

To Order: Call This Newspaper direct, or call Texas Press Service at 1-800-749-4793 Today!

NOTICE: While most advertisers are reputable, we cannot guarantee products or services advertised. We urge readers to use caution and when in doubt contact the Texas Attorney General at 1-800-621-0508 or the Federal Trade Commission at 1-877-FTC-HELP. The FTC web site is www.ftc.gov/bizop



CLUES ACROSS

1. Cirque (Welsh)
5. Behave in a certain manner
8. Foot apparel
10. Apothecaries' unit
12. Clown venue
14. Old Italian monetary units
16. Light spar
17. In heat
20. Oprah musical
23. Mahjong pieces
24. New Rochelle college
25. Copyread
27. Male sheep
28. Yeddo

CLUES DOWN

1. Reciprocal of a sine
2. Card game
3. Change shape
4. A way to ooze out
5. Chicago planetarium
6. Clearly delineated
7. Estonia's 2nd largest city
9. Killing yourself
11. Very large red gum tree
13. Impassive
15. A deep lethargic sleep
18. One of the forearm bones
19. Line formed by joining two pieces
21. Belonging to Apollo's mother
22. H : watering device
26. Nerd or wonk
30. Befuddled
31. Set or draw the boundaries of
32. The central area of a church
33. Titan mother of Helios
34. "Daisy Miller" author James
36. European sea eagle
37. High-powered
39. Cantaloupe or honeydew
42. Old subway entry disc
43. Statue of L : NYC lady
44. Fable author
45. Indistinctly
46. Mushers' conveyances
51. Soak flax or hemp

55. Abnormally closed sac in the body

29. Sizable roll of cash
32. Greatest in an indefinitely large series
35. Glass with many small bubbles
38. Polite interruption sound
40. With a red quality
41. Slated window coverings
47. Common piercing location
48. Electronic communication
49. Draft animal harnesses
50. Less light
52. Fiddled while Rome burned
53. Diacritical mark
54. Naval Training Program

Important Health Information About Calcium And Your Body

By Sally Robinson and Keith Bly

Calcium is one of the most important minerals that the body needs.

The body uses calcium to build strong bones, which doesn't completely develop until about age 17.

Calcium content in bones begins to decrease after the teen years, especially in women.

Children and teens who don't get enough calcium increase their risk of developing osteoporosis, a bone disease that causes bones to weaken and break easily.

Ninety-nine percent of the calcium in a child's body is stored in her bones and teeth.

The remaining 1 percent is in the bloodstream.

It is delivered throughout the body and plays a role in muscle contraction, blood clotting, absorption of other minerals and message transmission through nerves.

If the level of calcium in the blood is low because of poor calcium intake, it is taken from the bones to make sure that the body's cells function properly.

Many children fail to consume the FDA-recommended daily amount of calcium that their bodies need.

The culprit seems to be children's preference for soda over milk.

Carbonated beverages also contain chemicals that interfere with the way the body absorbs calcium.

Children up to age 3 need between 500 and 800 milligrams of calcium per day. Children ages 4 to 8 should get about 800 milligrams daily.

Twentens and teenagers, ages 9 to 18, should get 1,300 to 1,500 milligrams.

Notice that the older you get, the more calcium your body needs.

Milk and other dairy products are the best sources of calcium, but beans, cheese, yogurt, broccoli and other dark green leafy vegetables, almonds and calcium-fortified juices are good sources.

Children younger than 12 months should not have milk products because of the possibility of allergy.

Children between 1 and 2

years should drink whole milk because it provides dietary fats, which children need for normal growth and brain development.

After age 2, most children can switch to low fat or nonfat milk, but check with your child's pediatrician before switching.

All milk contains the same amount of calcium, regardless of the fat content.

Children who are allergic to milk or who are lactose intolerant can get calcium from soy-based or lactose-free products sold in most stores.

If you are concerned that your child is not getting enough calcium, ask your pediatrician about calcium supplements.

Dr. Sally Robinson is a professor of pediatrics at the Univer-

sity of Texas Medical Branch at Galveston Children's Hospital.

Dr. Keith Bly is a hospitalist and assistant professor of pediatrics.

This column is not intended

to replace the advice of a physician.

To view past articles, visit the UTMB Web site at www.utmb.edu/Childrens/RobinsonBly/HealthyKids.asp.

Homemaking Awards

Continued from page 6

Buddy Prause - Red
Cathy Sturm - Red
Sarah Uzzi - Red
Connie Whitlock - Grand Champion
Division XI & XII - Quilt Contests
Georgeann Baron - Best of Section
Irene Blaylock - Grand Champion
Lana Hane - Best of Section
Sharon Heimann - Best of Section

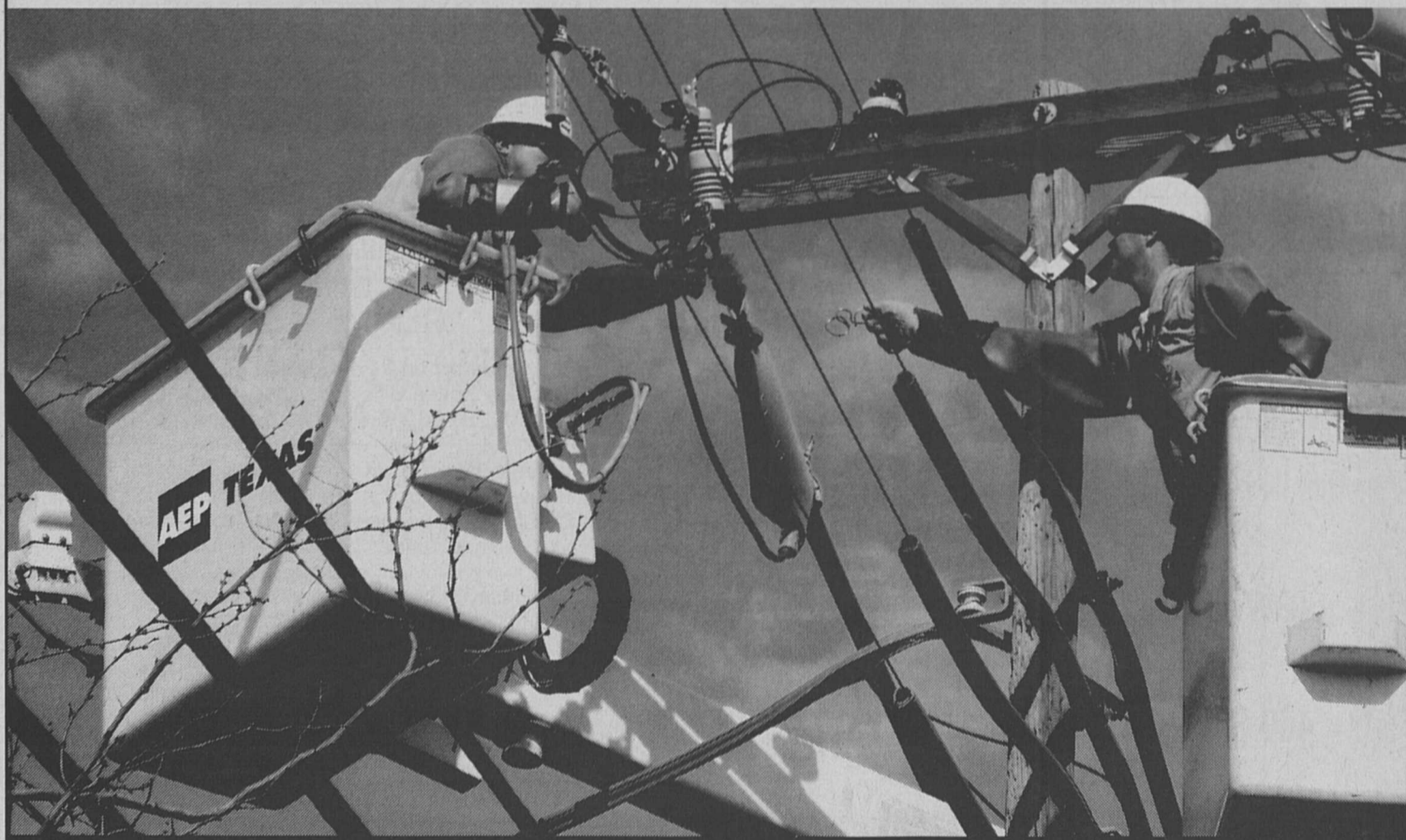
Alma Hilburn - Blue
Luedene Johnson - Red
Myrtle Kotrla - Red
Ann Moore - Blue
Virginia Pavlosky - Blue
Shirley Suttle - Go Texan Champion
Elsie Wick - Best of Show
Patricia Wilson - Reserve Champion
JoAnn Weishuhn - Best of Section
Division XIII - Fair Theme (All Age Groups Competing)
Michaela Herring - Reserve Champion
Terri Neuendorff - Red
Traci Neuendorff - Red
Travis Neuendorff - White
Bonnie Winkler - Grand Champion
Isabel Theut - Red
Division XVII - Writing Contest
Essay Category
Primary:
Grand Champion - Madison Pawlik
Reserve Champion - Colson Geisler
Junior:
Grand Champion - Brittany Moore
Reserve Champion - Kim Kunz
Senior:
Grand Champion - McKenna Hoskins
Reserve Champion - Lindsey Sommer
Adult:
Grand champion - Barbara Prause
Reserve Champion - Evelyn Grunewald

Division XIX - Shoenanigans (All Age Groups Competing)
Cheyenne Delling - Blue
Cheyenne Delling - Red
Lauren Dvorak - Red
Michaela Herring - Blue
Michaela Herring - Red
Barbara Martinek - Reserve Champion
Karolyn Mau - Red
Madison Mau - Reserve Champion
Terri Neuendorff - Red
Traci Neuendorff - Red
Travis Neuendorff - Red
Madi Olivarez - Blue
Marcus Olivarez - Blue
Barbara Prause - Red
Erin Prause - Grand Champion
Koree Robison - Red
Isabel Theut - Blue
Beverly Tuck - Red
Bonnie Winkler - Red
Judy Winkler - Red
Home:
Grand Champion - Delores Castillo
Reserve Champion - Ruby Marsh
Youth High Point Contest
Primary:
First - Cole Mau
Second - Nicole Hoelscher
Third - Michaela Herring
Junior:
First - Madison Mau
Second - Shelby Hoelscher
Third - Morgan Dyer
Senior:
Kristy Kulhanek

Poetry Category
Primary:
Grand Champion - Cole Mau
Reserve Champion - Michaela Herring
Junior:
Grand Champion - Hali Wisnoskie
Reserve Champion - Kieran Schmidt
Senior:
Grand Champion - Melissa Partes
Reserve Champion - Kirby Wunderlich
Adult:
Grand Champion - Kelli Hilscher
Home:
Grand Champion - Wayne Westfall

Division XIX - Shoenanigans (All Age Groups Competing)
Cheyenne Delling - Blue
Cheyenne Delling - Red
Lauren Dvorak - Red
Michaela Herring - Blue
Michaela Herring - Red
Barbara Martinek - Reserve Champion
Karolyn Mau - Red
Madison Mau - Reserve Champion
Terri Neuendorff - Red
Traci Neuendorff - Red
Travis Neuendorff - Red
Madi Olivarez - Blue
Marcus Olivarez - Blue
Barbara Prause - Red
Erin Prause - Grand Champion
Koree Robison - Red
Isabel Theut - Blue
Beverly Tuck - Red
Bonnie Winkler - Red
Judy Winkler - Red
Home:
Grand Champion - Delores Castillo
Reserve Champion - Ruby Marsh
Youth High Point Contest
Primary:
First - Cole Mau
Second - Nicole Hoelscher
Third - Michaela Herring
Junior:
First - Madison Mau
Second - Shelby Hoelscher
Third - Morgan Dyer
Senior:
Kristy Kulhanek

1:27 p.m. Monday



We're AEP Texas. We're connected to you.

AEP Texas delivers electricity to homes, business and industry in south and west Texas. We're committed to safely providing you and the many communities we serve with reliable electric service. No matter who your Retail Electric Provider is, AEP Texas will safely maintain the wires, poles and electrical system, and get the lights back on when outages do occur.

AEP Texas is there, always working for you.

To report an outage, please contact AEP Texas at 1-866-223-8508.

To discuss a billing problem, contact your Retail Electric Provider by calling the phone number shown on your monthly bill.



For more information visit AEPTexas.com.

Eagle Lake Headlight
Subscriptions Make
Great Gifts
Call Today
979-234-5521